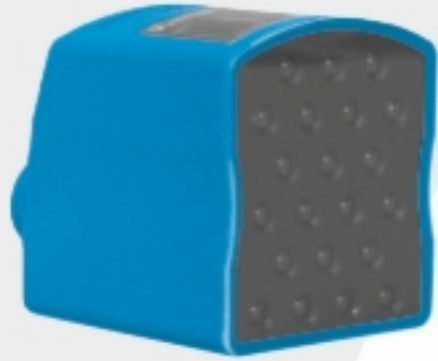


Spot Light



FW08-WH-3

Part Number



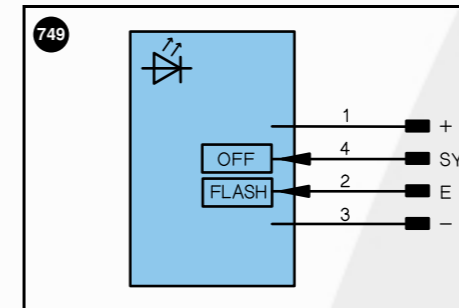
Technical Data

Optical Data	
Light Source	White Light
Service Life (T = +25°C)	100000 h
Electrical Data	
Supply Voltage	18...30 V DC
Current Consumption (U _b = 24V)	< 200 mA
Temperature Range	0...60 °C
Reverse Polarity Protection	yes
Mechanical Data	
Housing	Plastic
Protection Mode	IP 67
Connection	M 12x1
Protective Insulation, Rated Voltage	50 V



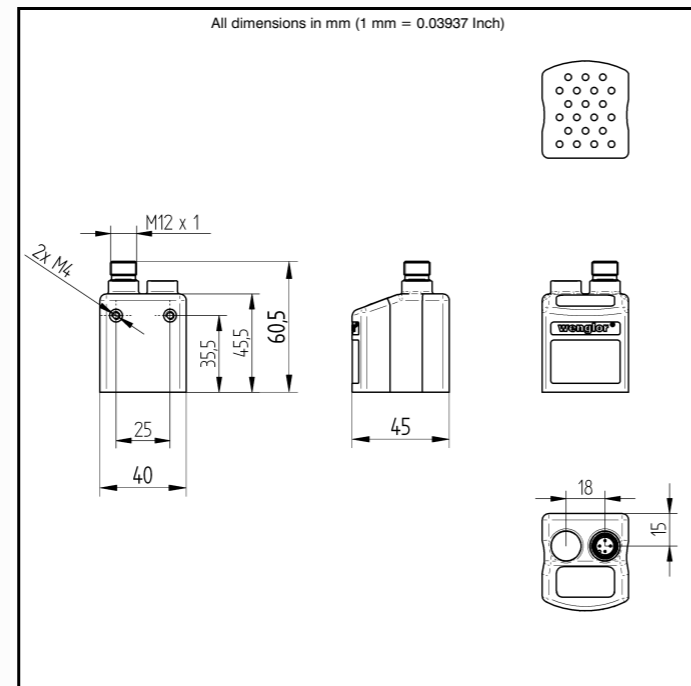
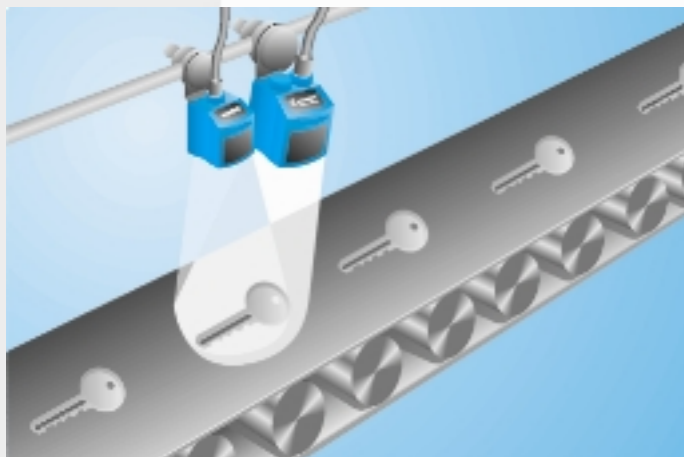
Plug Version	
Part Number	FW08-WH-3
Connection Diagram No.	749
Connection Table Nr.	32
Suitable Plug No.	1

- Compact housing
- Flashlight mode synchronizable with image processing
- High illumination intensity
- High protection class IP67



Legend			Wire colors according to DIN IEC 757		
+	Power supply "+"	U	Test input	BK	black
-	Power supply "0V"	W	Trigger input	BN	brown
-	Power supply (AC Voltage)	O	Analog output (1,2,3,...)	RD	red
A	Switching output (1,2,3...)/ NO	O-	Ground for the analog output	OG	orange
Ā	Switching output (1,2,3...)/ NC	BZ	Block discharge	YE	yellow
V	Contamination / Error output (NO)	AW	Valve output	GN	green
∇	Contamination / Error output (NC)	a	Valve control output "+"	BU	blue
E	Input (analog or digital)	b	Valve control output "0V"	VT	violet
T	Teach input	SY	Synchronization	GY	grey
Z	Time delay (activation)	E+	Receiver-Line	WH	white
S	Shielding	S+	Emitter-Line	PK	pink
RxD	RS-232 receive path	⊕	Grounding	GNYE	green yellow
TxD	RS-232 send path				

The wenglor spotlight illuminates the application evenly. It is mounted easily even at cramped space conditions. This illumination is suited to supplement internal illuminations.



Specifications are subject to change without notice
14/05

Accessories

- Adapter cable BG2BSW1-08M
- Mounting Bracket WMS12

Brightness profile

Offset from optical axis, distance 200 mm

