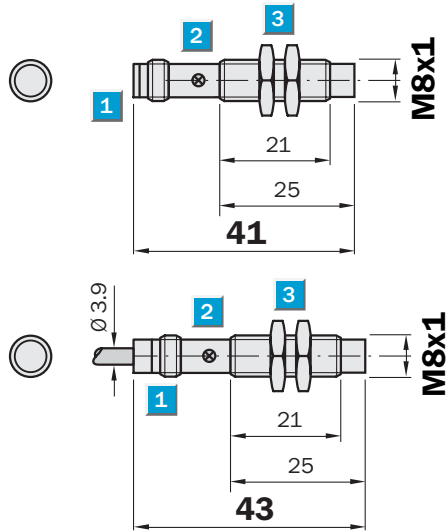


Sensing range
4 mm

Inductive sensor

- Short-circuit protection (pulsed)
- Robust brass housing, nickel-plated with fine thread M8 x 1 mm
- Enclosure rating IP 67
- Installation non-flush

Dimensional drawing

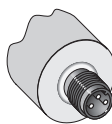


- 1 Connection
- 2 Display LED
- 3 Fastening nuts (2 x); width across 13, metal

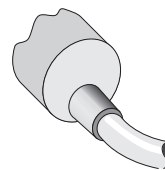


Connection type

IME08-04NNOZTOK	IME08-04NNOZW2K
IME08-04NNSZTOK	IME08-04NNSZW2K
IME08-04NPOZTOK	IME08-04NPOZW2K
IME08-04NPSZTOK	IME08-04NPSZW2K



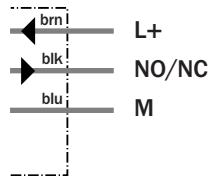
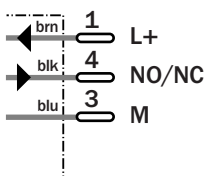
M8, 3-pin



3 x 0.14 mm²

Accessories

Connector, M8, 3-pin



Technical specifications		IME08-	04NNO ZTOK	04NNO ZW2K	04NNS ZTOK	04NNS ZW2K	04NPO ZTOK	04NPO ZW2K	04NPS ZTOK	04NPS ZW2K		
Sensing range S_n	4 mm											
Electrical configuration	DC3-wire											
Supply voltage V_s	DC 10 ... 30 V											
Ripple U_{pp}	$\leq 10\%$											
Voltage drop U_d	$\leq 2\text{ V}^{1)}$											
Power consumption	$\leq 10\text{ mA}^{2)}$											
Continuous current I_a	$\leq 200\text{ mA}$											
Time delay before availability t_v	$\leq 100\text{ ms}$											
Hysteresis H, of s_r	5 ... 15 %											
Repeatability R	Typ. 2 % (U_b and T_a constant) ³⁾											
Temperature drift, of s_r	$\pm 10\%$											
EMC	According to EN 60947-5-2											
Switching output	NPN											
	PNP											
Output function	Normally closed											
	Normally open											
Installation	Non-flush											
Connection type	Connector, M8, 3-pin											
	Cable, PVC, 2 m											
Enclosure rating	IP 67 ⁴⁾											
Max. switching frequency	4000 Hz											
Dimensions	M8 x 1 ⁵⁾											
Short-circuit protection	✓ ⁶⁾											
Reverse polarity protection	✓											
Power-up pulse suppression	✓											
Shock/vibration stress	30 g, 11 ms/10 ... 55 Hz, 1 mm											
Ambient temperature T_a	-25 °C ... +75 °C											
Housing material	Brass nickel-plated, plastic (PA6)											
Tightening torque	Typ. 5 Nm											
Approvals												
Protection class	<input type="checkbox"/>											
UL approval	cULus Listed											

¹⁾ At I_a max
²⁾ Without load

³⁾ Of s_r
⁴⁾ According to EN 60529

⁵⁾ Thread diameter x pitch (mm)
⁶⁾ (Pulsed)

Reduction factor R_M

The following are reference values, which may vary from type to type:

St37 (Fe)	1
Stainless steel (V2A)	Approx. 0.8
Aluminum (solid)	Approx. 0.45
Copper (Cu)	Approx. 0.4

Ordering information

Type	Part Number
IME08-04NNOZTOK	1040897
IME08-04NNOZW2K	1040899
IME08-04NNSZTOK	1040893
IME08-04NNSZW2K	1040895
IME08-04NPOZTOK	1040889
IME08-04NPOZW2K	1040891
IME08-04NPSZTOK	1040885
IME08-04NPSZW2K	1040887